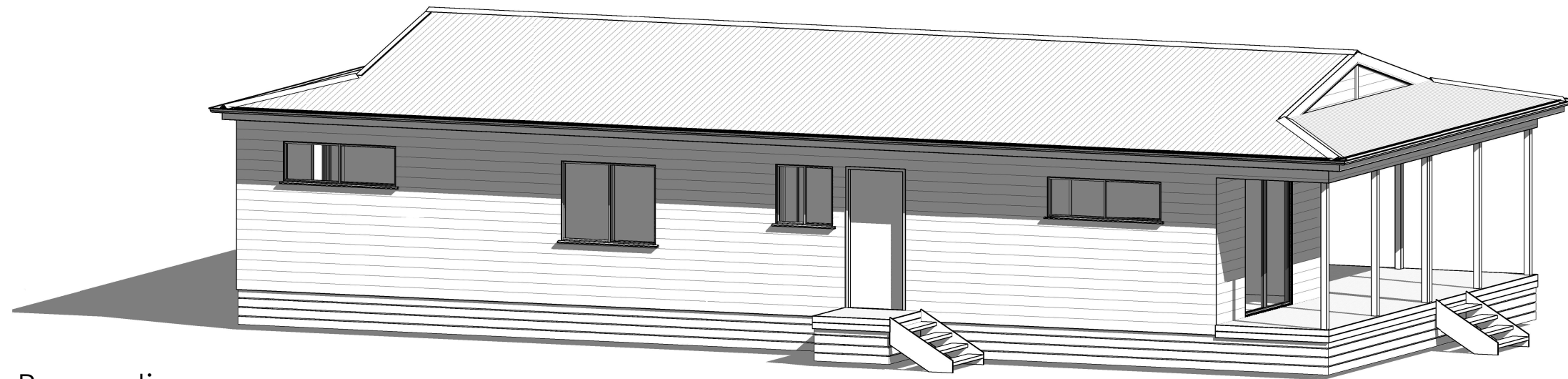
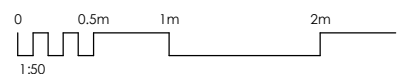
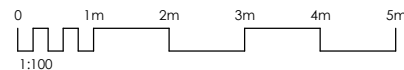




Perspective  
FRONT



Perspective  
BACK

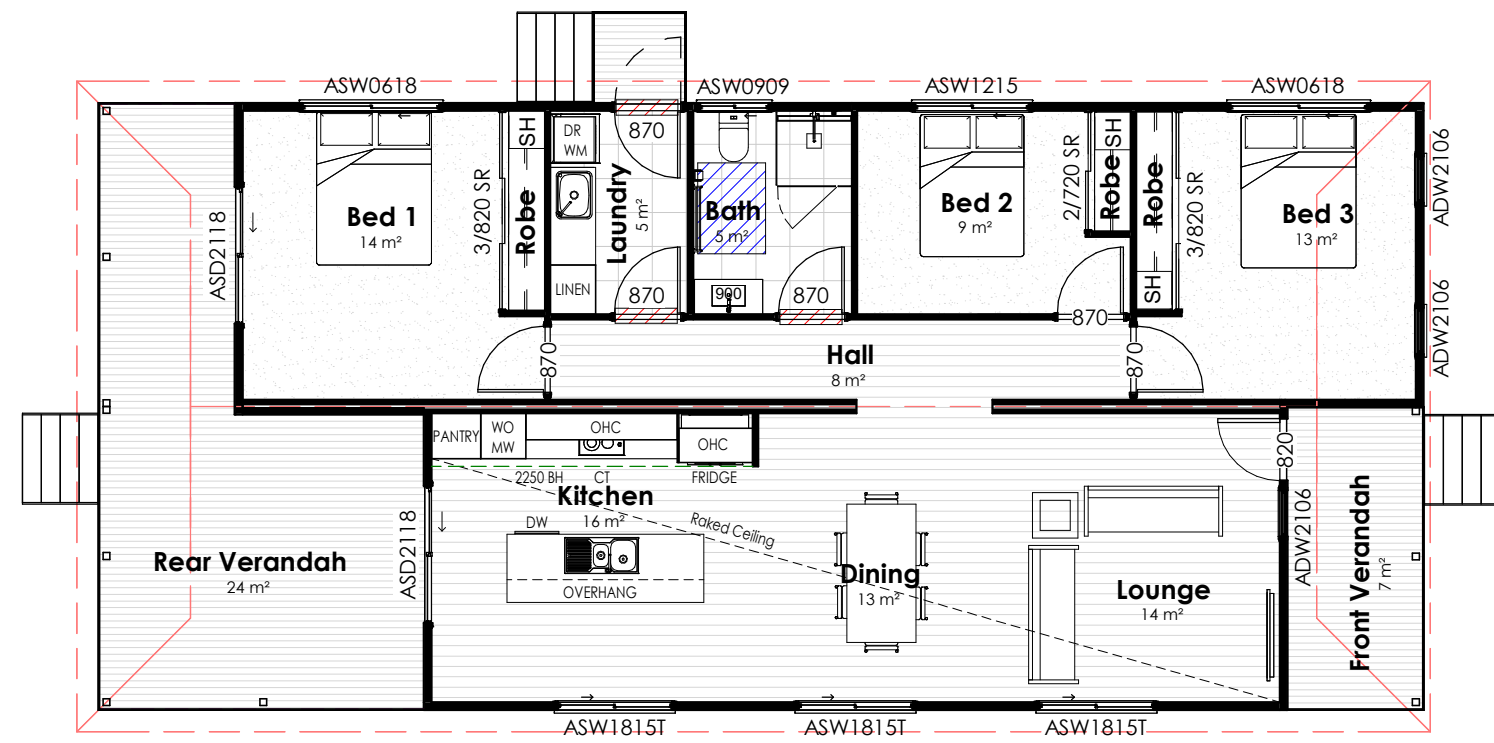
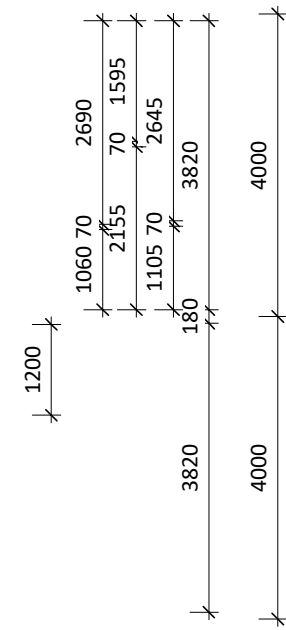
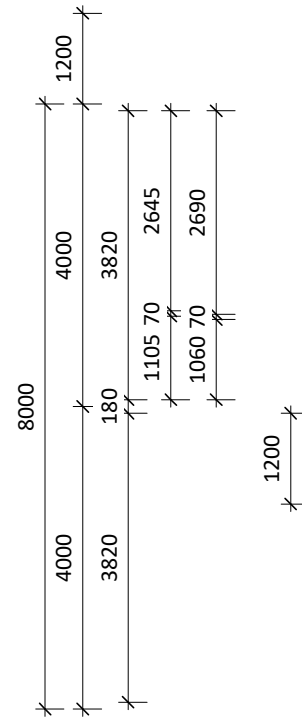
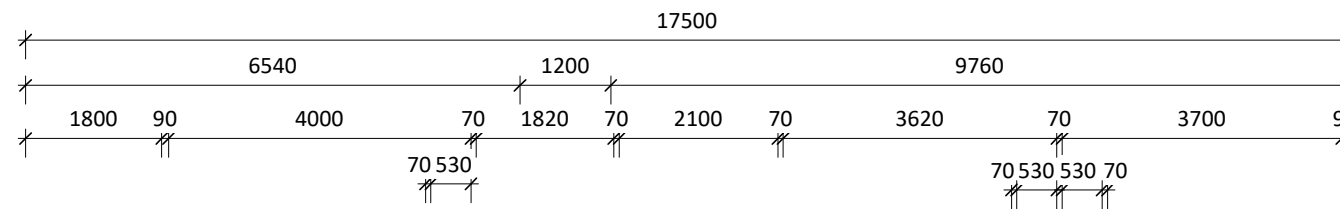


Active Construction Group Pty Ltd Trading as Westbuilt Homes  
 Postal: PO Box 663, Warwick QLD 4370  
 Head Office & Factory: 38-48 Project Street Warwick QLD 4370  
 FREECALL | 1800 688 044  
 ADMINISTRATION | (07) 4660 1600  
 OPERATIONS | (07) 4660 1605  
 SALES EMAIL | sales@westbuilt.com.au  
 WEBSITE | www.westbuilt.com.au

**WESTBUILT**  
HOMES

ABN: 40 165 638 988 ACN: 165 638 988  
 Q.B.C.C Licence QLD: 12 847 58  
 Building Licence NSW: 26 638 8C

**BARCOO MK2**

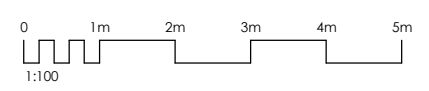


**NCC - LIVABLE HOUSING DESIGN**

- 1200mm X 900mm CIRCULATION SPACE IN FRONT OF THE TOILET PAN
- 5mm MAXIMUM SILL HEIGHT
- EXTRA NOGGINS TO BE PROVIDED FOR FUTURE HANDRAILS

Gross Building Area		
Name	Area (m <sup>2</sup> )	Squares (SQ)
GL.F.F.Level		
Front Verandah	7.2 m <sup>2</sup>	0.78
Landing	1.4 m <sup>2</sup>	0.15
Living Area	108.6 m <sup>2</sup>	11.69
Rear Verandah	24.2 m <sup>2</sup>	2.60
	141.4 m <sup>2</sup>	15.22
Grand total	141.4 m <sup>2</sup>	15.22

Plan  
Floor Plan 1 : 100



Active Construction Group Pty Ltd Trading as Westbuilt Homes  
 Postal: PO Box 663, Warwick QLD 4370  
 Head Office & Factory: 38-48 Project Street Warwick QLD 4370  
 FREECALL | 1800 688 044  
 ADMINISTRATION | (07) 4660 1600  
 OPERATIONS | (07) 4660 1605  
 SALES EMAIL | sales@westbuilt.com.au  
 WEBSITE | www.westbuilt.com.au

ABN: 40 165 638 988 ACN: 165 638 988  
 Q.B.C.C Licence QLD: 12 847 58  
 Building Licence NSW: 26 638 8C

# BARCOO MK2